



SageQuest provides GPS vehicle tracking and management solutions that improve the efficiency and productivity of any mobile workforce. Our solution, Mobile Control, delivers the highest quality insight into workforce activity and our experienced staff provides the personal service you need to maximize the value of your investment.

In a crowded marketplace, SageQuest stands apart in our approach to delivering value to our customers. The roots of our management and product development teams are in the business information industry, and that experience creates a unique focus on delivering insight—not just data or software.

Over the last five years, SageQuest has improved the productivity and efficiency of mobile workforces across the United States. With tens of thousands of units in service nationwide, SageQuest has established itself as one of the premier providers of GPS fleet tracking and management products and stands well positioned to remain a leader in the marketplace.

Contents

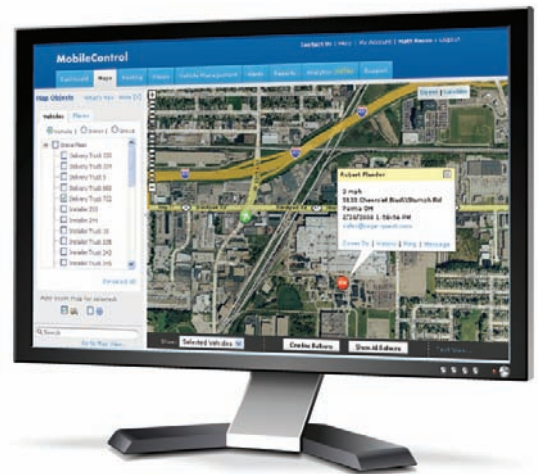
Maps	2	Analytics	9
Navigation	4	Alerts	10
Vehicle History	5	Vehicle Management	11
Places	5	SageQuest Service	12
Reports	6	My Account	13
Summary Reports	6		
Activity Reports	7		
Vehicle Performance Reports	8		

The SageQuest Difference

Leading Product Capabilities

We are committed to having the best vehicle tracking and management solution available anywhere.

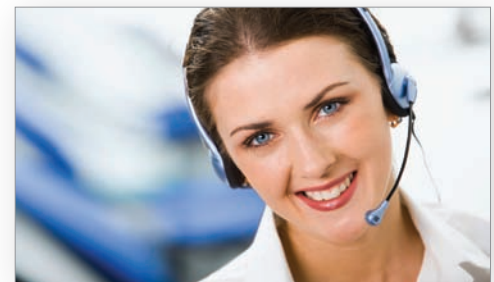
- We maintain the level of product development investment necessary to keep up with the evolving needs of our customers and make the most of new technologies.
- The design and development of Mobile Control is based on careful attention to the details of when, where and how our customers use it.



Business Partner—Not Just a Technology Provider

We believe that the people that stand behind our solution are a critical part of the value we provide to our customers.

- We provide installation coordination, professional training and accessible phone support from our headquarters in Solon, Ohio to ensure that you get up and running quickly and easily.
- We understand that our success depends on the results of our customers, and for that reason we offer proactive assistance to help you maximize the value of your investment with us.



Added Value Through Integration Capabilities

We partner with leading software providers in key vertical markets to deliver added-value and we provide the tools you need to fit our solution within your existing business.

- The combination of real-time vehicle location data along with other workforce management applications creates deeper visibility and insight into workforce activity.
- Using our powerful integration tools, customers can improve the accuracy and overall value of their existing systems through the objective view of vehicle location.



Proven Experience Delivering Enterprise Grade Service

We know that one size does not fit all. We have the necessary breadth of product capabilities and depth of experienced talent to serve the needs of any size customer.

- Mobile Control is designed to support the needs of any size fleet, including powerful administration tools for managing access across your business.
- We offer the dedicated support and professional services necessary to ensure a successful implementation at the enterprise level.

